



Features

- Optimized for video over ADSL2+ / VDSL2 applications
- Superior handling of ring currents at 400 - 500 mA
- Service interoperability and compatibility
- Multiple "Home Run" connections
- Meets requirements of ITU G.992.3/5 and ANSI T1.413
- UL Listed per UL 1863
- Optional Insulation Displacement Connectors (IDC)

361xA2 Series ADSL2+ / VDSL2 POTS Splitters

The Bourns® 3610A2, 3611A2 and 3612A2 are high quality ADSL2+ / VDSL2 POTS splitters designed to fit industry-standard Network Interface Devices (NIDs). The new POTS splitters are optimized for high bit-rate video over ADSL2+ / VDSL2 applications. The products are ANSI T1.413 compliant and meet the requirements of ITU G.992.3 and G.992.5 and can be used with ADSL, ADSL2+, VDSL and VDSL2. The 361xA2 POTS splitters accept the incoming combined voice & data service, filter off the voice (POTS) channel and provide a connection point for the DSL data services (ADSLx modem). In the event of power loss, the passive filter design allows for lifeline POTS service.

Bourns offers the ADSL2+ POTS splitter in three industry standard footprints (binding post, snap in and bus mount) which occupy only a single space in the NID. Fitted with screw terminals and flying leads, the 361xA2 units can be installed in minutes. When combined with a Bourns® Multi-Stage (MSP®) Station Protector, Sealed Switching Jack, and optional IDC expansion bridge, a complete ADSL2+ / VDSL2 solutions package is provided for the customer premises.

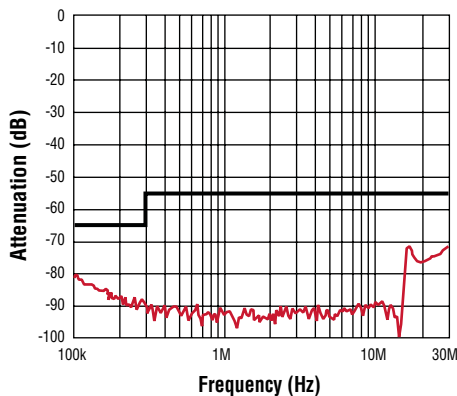
Characteristics

DC Loop Current	0-100 mA
DC Loop Voltage	0 to -60 V
DC Resistance	≤25 ohms
Insertion Loss (Voice Band)	<1.0 dB
Attenuation Distortion (Voice Band)	< ±0.5 dB
Delay Distortion (Voice Band)	<200 μs
Return Loss (Voice Band)	8 dB ERL; 5 dB SRL-Low; 5 dB SRL-High
Longitudinal Balance, Two Port Technique, POTS to Line Port (U-R); Line Port to POTS	>58 dB @ 0.2 to 1 kHz >53 dB @ 3 kHz
ADSL Band Attenuation.....	>65 dB @30 kHz – 300 kHz >55 dB @301 kHz – 20 MHz
Tip to Ring Capacitance (POTS Port)	<115 nF
Input Impedance (Loading the ADSL Band)	<0.25 dB 30 kHz – 30 MHz
Storage and Operating Temperature	-55 to +85 °C

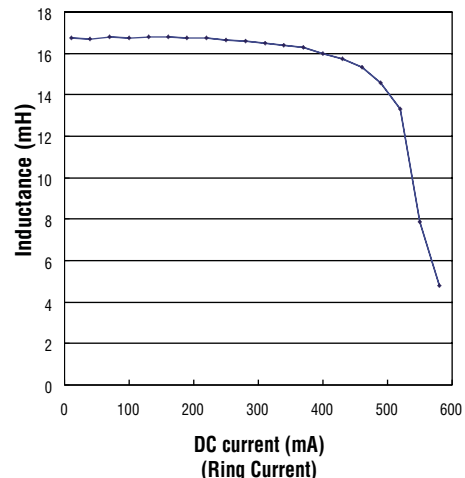
How To Order

Stud Mount	Part #3610A2
Stud Mount w/IDC	Part #3610A2-IDC
Press Mount.....	Part #3611A2
Bus Mount	Part #3612A2

Band Attenuation



DC Bias Characteristics (Ring Current)

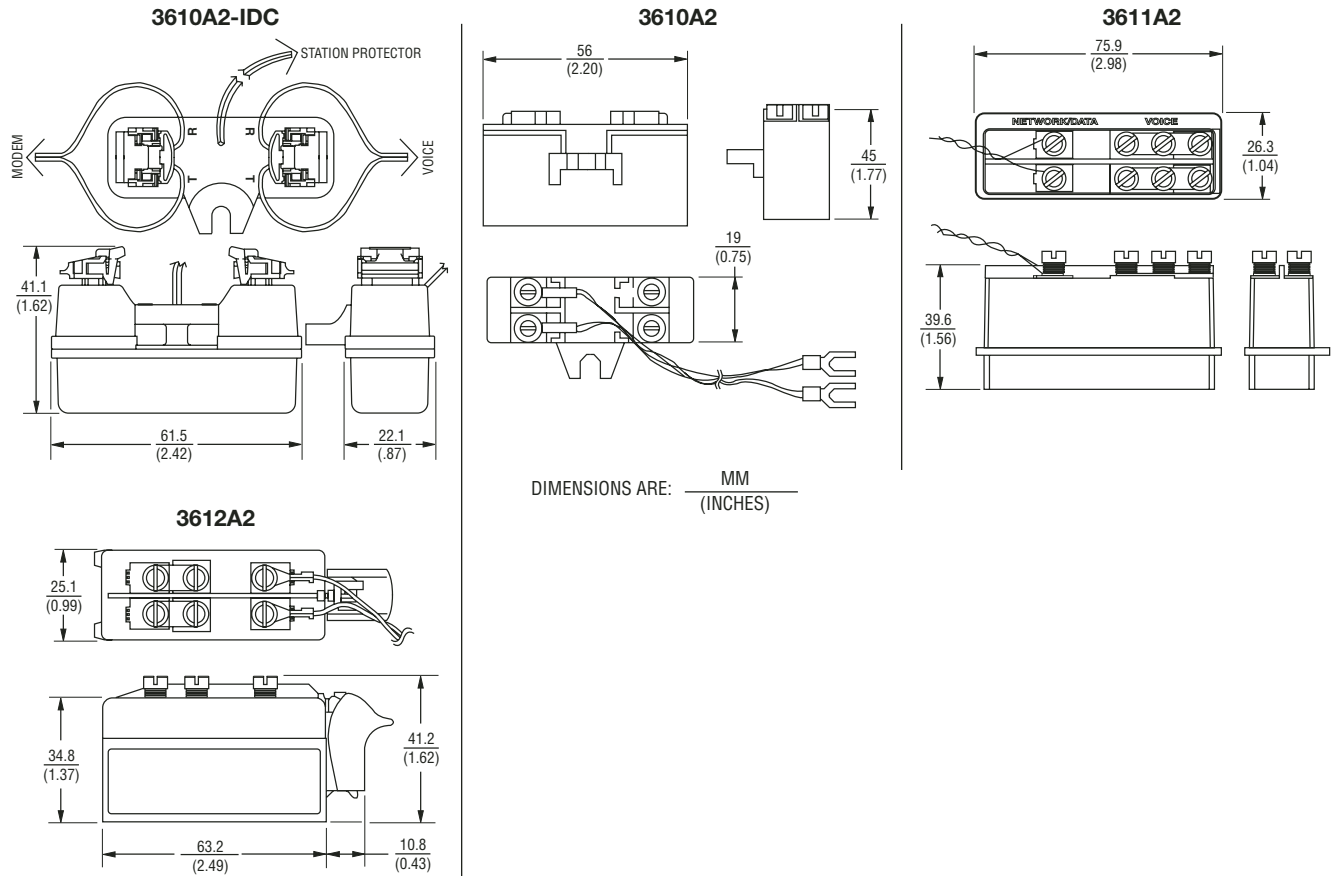


"MSP" is a registered trademark of Bourns, Inc. Specifications are subject to change without notice. Customers should verify actual device performance in their specific applications.

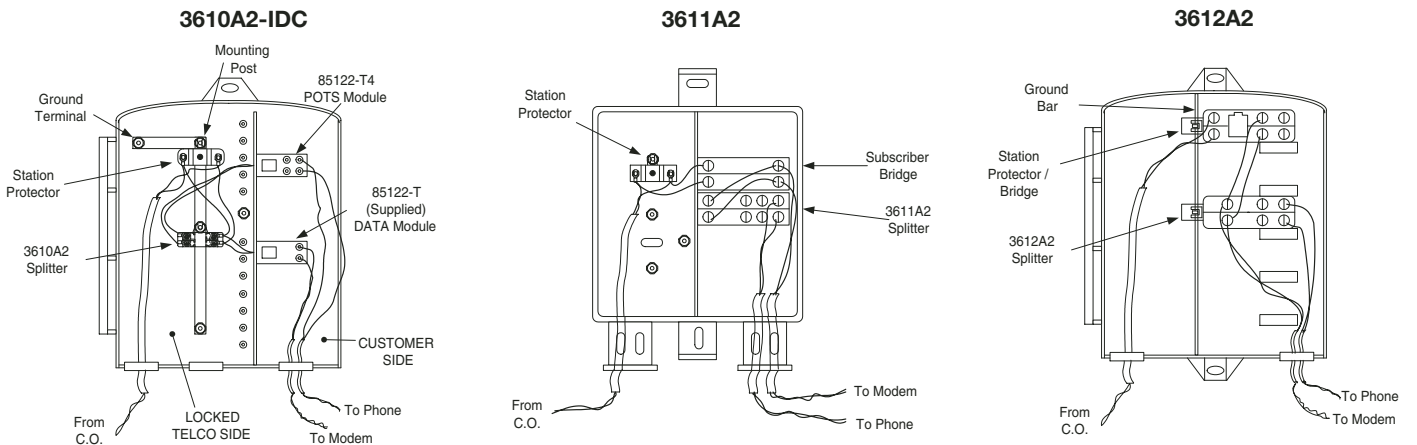
361xA2 Series ADSL2+ POTS Splitters

BOURNS®

Product Dimensions



Installation Diagrams



REV. E 01/08

Specifications are subject to change without notice. Customers should verify actual device performance in their specific applications.