

Features

- Compact
- Lightweight
- Long life
- Infinite resolution
- Free shaft rotation
- AC or DC
- Shaft options available
- Flexible wire leads
- Economical
- RoHS compliant*

3048 Linear Motion Potentiometer

Specifications†

Standard Electrical Travel	0.2, 0.3, 0.4, 0.5 in. (5.08, 7.62, 10.16, 12.70 mm)
Standard Resistances	1K ohms to 50K ohms (± 20 %)
Independent Linearity	± 5 %
Resolution	Infinite
Power Rating @ 70 °C (158 °F)	
Range 2, 3	0.12 watt
Range 4, 5	0.25 watt
Operating Temperature Range	-55 °C to +125 °C
Temperature Coefficient	... 1000 PPM/°C
Insulation Resistance	... 50 megohms @ 500 VDC
Backlash	Negligible
Shaft Actuating Force	... 4 oz. max. @ 70 °F
Life	... 500,000 cycles
Shock	... 50 G for 7 msec
Vibration	... 20 G, 10-2 kHz
Marking	... Manufacturer's trademark, resistance code, wiring diagram, date code, manufacturer's model number and style

Specifications are typical. Contact factory for special requirements.
 † Specifications applicable from 5 % to 95 % of electrical travel.

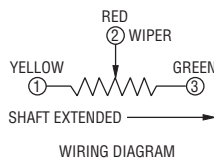
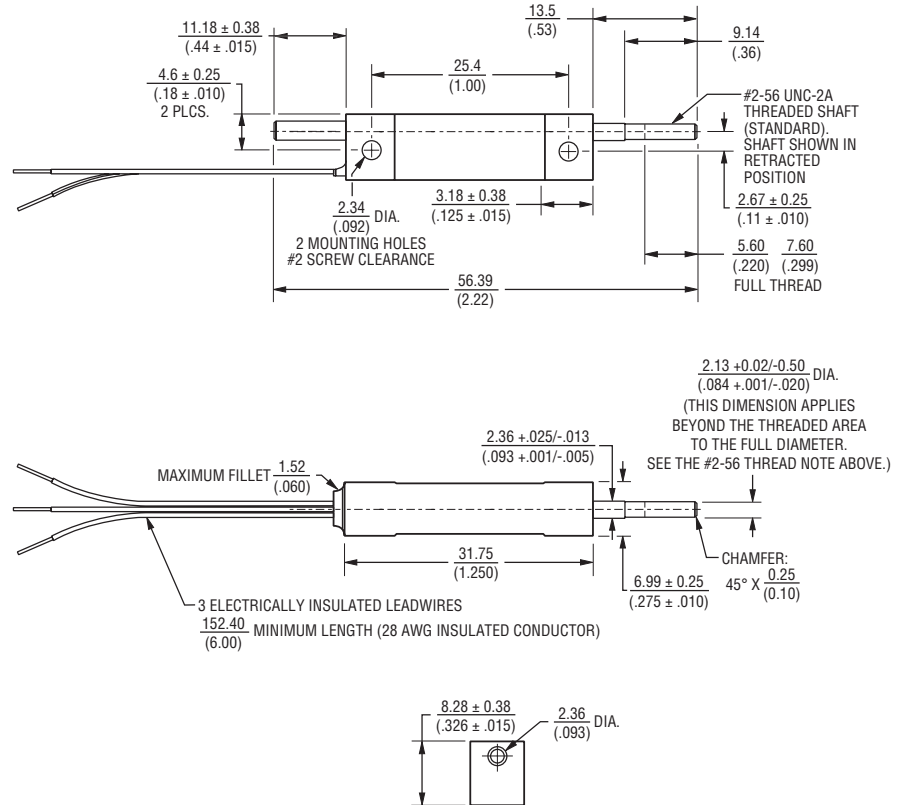
How to Order

3048 L - 2 - 502

Model	_____
Style	_____
Range (Travel)	_____
2 = 0.2" (5.08 mm)	
3 = 0.3" (7.62 mm)	
4 = 0.4" (10.16 mm)	
5 = 0.5" (12.70 mm)	
Resistance Value	_____

Stainless steel shaft is available upon request.

Product Dimensions



TOLERANCES: ± .010 (0.25) EXCEPT WHERE NOTED

DIMENSIONS: $\frac{MM}{(INCHES)}$

Standard Resistance Table

Resistance (Ohms)	Resistance Code
1,000	102
2,500	252
5,000	502
10,000	103
20,000	203
50,000	503

REV. 07/09

*RoHS Directive 2002/95/EC Jan 27 2003 including Annex.
 Specifications are subject to change without notice.
 Customers should verify actual device performance in their specific applications