

\*RoHS COMPLIANT



**BOURNS®**

## Features

- Edge control
- Various knurled knobs are tooled
- Additional models and versions available
- Carbon resistive element

## 0074 - Rotary Potentiometer

### Characteristics

Mechanical Angle.....240 °±10 °  
 Starting Torque.....0.7 to 2.5 Ncm  
 End Stop Strength.....>30 Ncm  
 Resistance Range  
 .....100 ohms to 4.7 megohms  
 Resistance Taper.....Linear  
 Power Rating .....0.20 W  
 Temperature Range.....-25 °C to +70 °C  
 Rotational Life.....10,000 cycles

### Standard Resistance Table

Resistance (Ohms)	Resistance Code
100	101
220	221
470	471
1,000	102
2,200	222
4,700	472
10,000	103
22,000	223
47,000	473
100,000	104
220,000	224
470,000	474
1,000,000	105
2,200,000	225
4,700,000	475

### How to Order

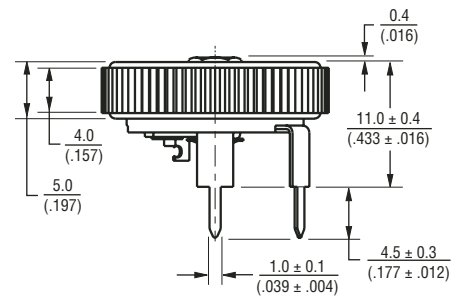
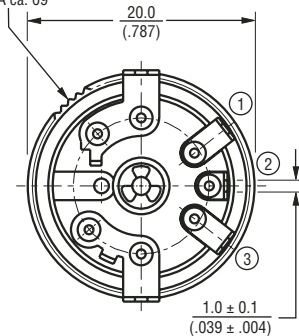
**0074 - 600 - A B 103**

Model Type \_\_\_\_\_  
 • 0074  
 Terminal Style and Knob Version \_\_\_\_\_  
 • 600 (Other knobs available upon request)  
 Independent Linearity \_\_\_\_\_  
 A = ±5 %  
 Element Taper \_\_\_\_\_  
 B = Linear Carbon ±20 %  
 M = Linear Carbon ±30 %  
 Resistance Code \_\_\_\_\_  
 Other versions available upon request.

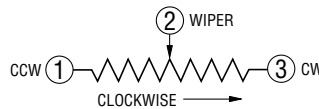
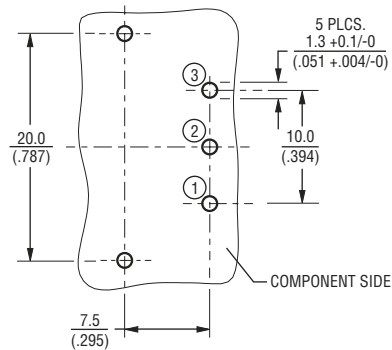
### Product Dimensions

0074-600

KNURL DIN 82  
 RAA ca. 09



### Recommended PCB Layout



DIMENSIONS ARE:  $\frac{\text{MM}}{\text{(INCHES)}}$



Sensors & Controls

**Asia-Pacific:**  
 Tel: +886-2 2562-4117  
 Fax: +886-2 2562-4116  
**Europe:**  
 Tel: +41-41 768 5555  
 Fax: +41-41 768 5510  
**The Americas:**  
 Tel: +1-951 781-5500  
 Fax: +1-951 781-5700  
[www.bourns.com](http://www.bourns.com)